



PUSH-IN ADAPTOR

- + For different materials
- + Internal seal
- + Resistant to 0.5 bar

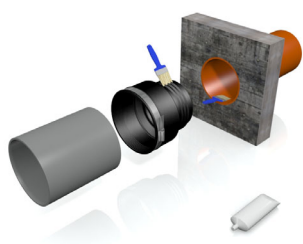
Push-In Adaptor – for the internal connection of pipe systems with different dimensions and materials

The Single Pipe Connector joins pipe systems with different dimensions and materials and can be used for flush-mounting and non-buried pipe connections.

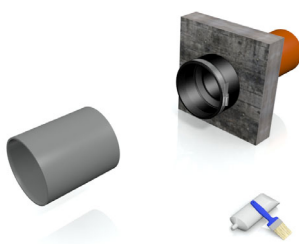
The Push-In Adaptor is made from a durable EPDM rubber and has a noise reducing impact on downpipes.



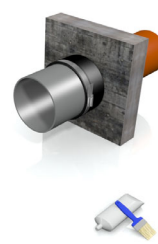
MONTAGE



Position pipe ends.

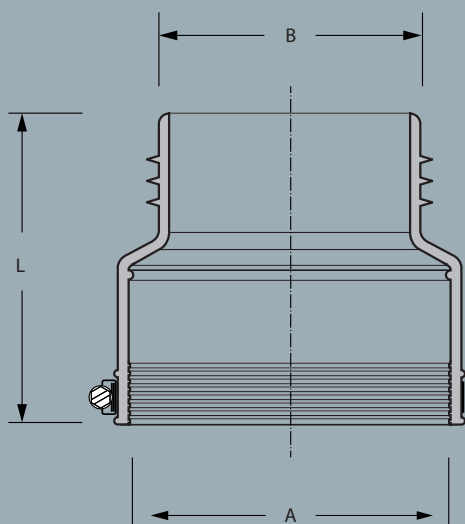


Insert Single Pipe Connector into larger pipe. Apply lubricant to plain ended pipe.



Insert smaller pipe into Single Pipe Connector.

DESCRIPTION



TECHNICAL SPECIFICATION

Push-In Adaptor for the internal connection of pipe systems with different dimensions and materials.

Manufacturer:
Pressure Tightness:
Sealing Material:
Temperature Resistance:
Standard/Approval:

MISSION RUBBER (UK) Ltd., Sheffield, S35 9TG, T +44 (0) 114 257 - 0040, F - 1122
0.5 bar water / -0.3 bar vacuum
EPDM rubber according to BS EN 681-1
-40°C to +120°C, temporary max. temperature +160°C
BS EN 681-1, CE16



PRODUCT RANGE

PUSH-IN ADAPTOR						
Article Number	References	A Size Range (mm)	B Size Range (mm)	L Length (mm)	resistant to (bar)	Weight (kg)
500117	Push-In Adaptor MSA 75	69 - 75	73 - 85	100	0,5	0,20
500116	Push-In Adaptor MSA 100	100 - 105	100 - 116	100	0,5	0,30
500118	Push-In Adaptor MSA 125	117 - 125	120 - 141	100	0,5	0,50