



Adaptor Coupling

MAC

- + Adaptor for different outside diameters
- + For above and below ground
- + External compression seal
- + Resistant to 0.6 bar

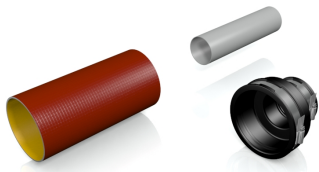
Adaptor Coupling MAC - for the external connection of all pipe systems with different outside diameters

The Adaptor Coupling MAC connects all plain ended pipes with different outside diameters and materials.

The Adaptor Coupling MAC can be used for applications above and below ground as well as inside and outside of buildings.

When changing nominal diameters, the flow direction needs consideration.

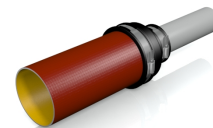
INSTALLATION



Position plain ended pipes.

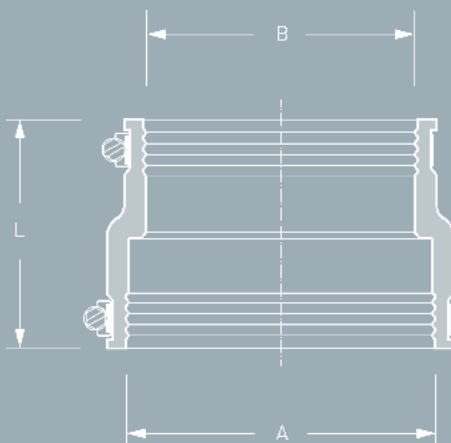


Slide adaptor coupling over one plain end.



Push other plain ended pipe into adaptor coupling and tighten clamps.

DESCRIPTION



TECHNICAL SPECIFICATION

Adaptor Coupling MAC for the external connection of all plain ended pipe systems with different outside diameters for applications above and below ground as well as inside and outside of buildings.

Pipe 1 DN/Material _____
 Pipe 2 DN/Material _____

Article Number _____
 _____ Qty _____ Price/Unit _____ Total

Manufacturer: MISSION RUBBER (UK) Ltd., Sheffield, S35 9TG, T +44 (0) 114 257 - 0040, F - 1122
 Pressure Tightness: 0.6 bar water / -0.3 bar vacuum
 Jetting Resistance: 120 bar
 Sealing Material: EPDM rubber with lock in place profile according to BS EN 681-1 AISI
 Stainless Steel: 304/1.4301, alternatively AISI 316/1.4404 according to BS EN 10088-2
 Temperature Resistance: -40°C to +120°C, temporary max. temperature +160°C
 Standard/Approval: BS EN 16397-2, CE16

PRODUCT RANGE 

ADAPTOR COUPLING MAC							
Article Number	Reference	A Size Range (mm)	B Size Range (mm)	L Length (mm)	resistant to (bar)	Nm	Weight (kg)
500009	MAC 0401	32 - 40	24 - 32	65	0,6	3	0,10
500010	MAC 0501	40 - 50	24 - 32	65	0,6	3	0,10
500011	MAC 0502	40 - 50	32 - 40	65	0,6	3	0,10
500012	MAC 0632	53 - 63	32 - 40	65	0,6	3	0,10
500013	MAC 0633	53 - 63	40 - 50	90	0,6	3	0,20
500014	MAC 0893	75 - 89	40 - 50	100	0,6	3	0,40
500015	MAC 0894	75 - 89	53 - 63	100	0,6	3	0,25
500016	MAC 1153	100 - 115	40 - 50	100	0,6	3	0,45
500017	MAC 1154	100 - 115	53 - 63	100	0,6	3	0,30
500018	MAC 1155	100 - 115	75 - 89	100	0,6	3	0,45
500019	MAC 1251	110 - 125	80 - 95	120	0,6	6	0,60
500020	MAC 1252	110 - 125	100 - 115	120	0,6	6	0,60
500021	MAC 1360	121 - 136	75 - 89	100	0,6	6	0,55
500022	MAC 1361	121 - 136	80 - 95	120	0,6	6	0,65
500023	MAC 1362	121 - 136	100 - 115	120	0,6	6	0,60
500024	MAC 1363	121 - 136	110 - 125	120	0,6	6	0,60
500025	MAC 1451	130 - 145	95 - 110	100	0,6	6	0,50
500026	MAC 1452	130 - 145	110 - 125	120	0,6	6	0,65
500027	MAC 1501	135 - 150	100 - 115	100	0,6	6	0,45
500028	MAC 1602	144 - 160	110 - 125	120	0,6	6	0,75
500029	MAC 1603	144 - 160	121 - 136	120	0,6	6	0,75
500030	MAC 1701	155 - 170	100 - 115	150	0,6	6	0,95
500031	MAC 1702	155 - 170	110 - 125	120	0,6	6	0,75
500032	MAC 1703	155 - 170	130 - 145	120	0,6	6	0,75
500033	MAC 1801	160 - 180	100 - 115	150	0,6	6	1,00
500034	MAC 1802	160 - 180	110 - 125	150	0,6	6	1,10
500035	MAC 1805	160 - 180	155 - 170	150	0,6	6	1,25
500036	MAC 1922	170 - 192	110 - 125	120	0,6	6	0,85
500037	MAC 1923	170 - 192	121 - 136	120	0,6	6	0,85
500038	MAC 1924	170 - 192	144 - 160	120	0,6	6	0,85
500039	MAC 1991	180 - 200	100 - 115	150	0,6	6	1,15
500040	MAC 1993	180 - 200	121 - 136	150	0,6	6	1,20
500041	MAC 2000	180 - 200	130 - 145	150	0,6	6	1,35

Larger sizes see Mücher-Civils.